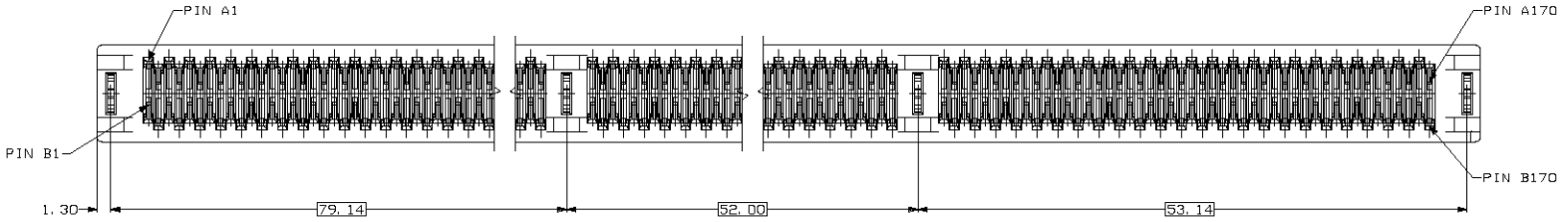
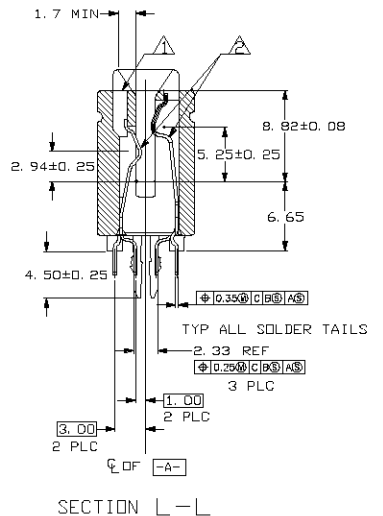
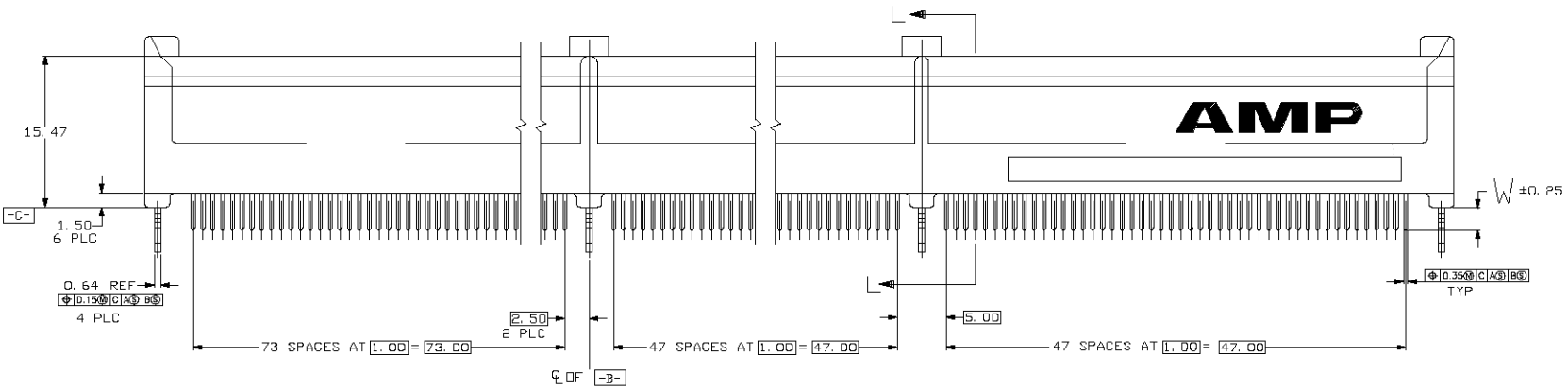
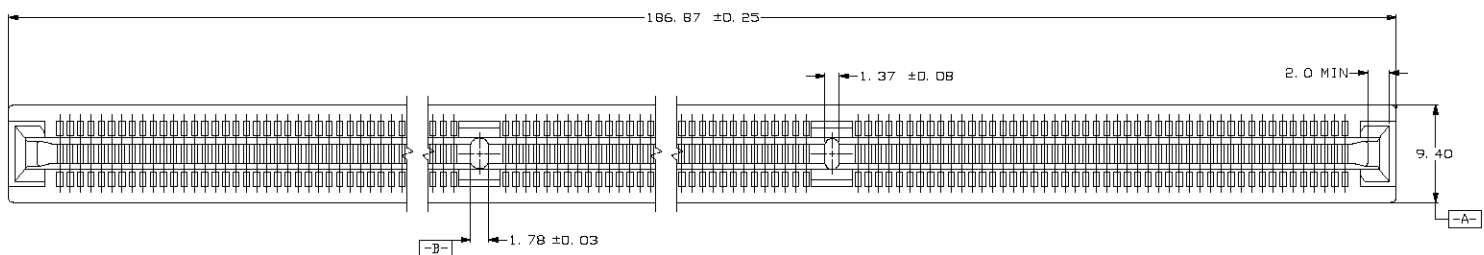


THIS DRAWING IS UNPUBLISHED.  
 RELEASED FOR PUBLICATION  
 BY TYP ELECTRONICS CORPORATION. ALL RIGHTS RESERVED.

REVISIONS					
LOC	REV	DATE	DESCRIPTION	BY	APP
0	0	22MAR05	RELEASED EGR-05-003216	G.Z.	I.E.



- △ MATERIAL: HOUSING, THERMOPLASTIC, COLOR: BROWN.  
CONTACTS, PHOSPHOR BRONZE.  
HOLD-DOWNS, BRASS.
- △ FINISH: CONTACTS, 1.27 MIN. MICROMETERS NICKEL ALL OVER,  
0.38 MIN. MICROMETERS GOLD OVER NICKEL IN CONTACT AREA,  
2.54 MIN MICROMETERS TIN OVER NICKEL ON SOLDER TAILS.
- △ FINISH: CONTACTS, 1.27 MIN. MICROMETERS NICKEL ALL OVER,  
0.0254-0.0762 MICROMETERS GOLD OVER NICKEL IN CONTACT AREA,  
2.54 MIN. MICROMETERS TIN OVER NICKEL ON SOLDER TAILS.

△	3.18	5145275-6
△	2.54	5145275-5
△	3.18	5145275-3
△	2.54	5145275-2
△	2.16	5145275-1
PLATING	W	PART NO

THIS DRAWING IS A CONTROLLED DOCUMENT.

DESIGNED BY: QAVIN ZHANG	DATE: 22MAR05	BY: QAVIN ZHANG	DATE: 22MAR05
CHECKED BY: STEVEN YAO	DATE: 22MAR05	BY: STEVEN YAO	DATE: 22MAR05
APPROVED BY: LENDOMOTO	DATE: 22MAR05	BY: LENDOMOTO	DATE: 22MAR05

UNIVERSITY MICROFILMS  
SERIALS ACQUISITION  
300 N ZEEB RD  
ANN ARBOR MI 48106-1500

TYPE: Electronics Corporation  
Shanghai, P.R.China, 200223

PRODUCT SPEC: ASSEMBLY, 340 POSITION  
1mm, CARD EDGE CONNECTOR

APPLICATION SPEC: ---

MATERIAL: ---

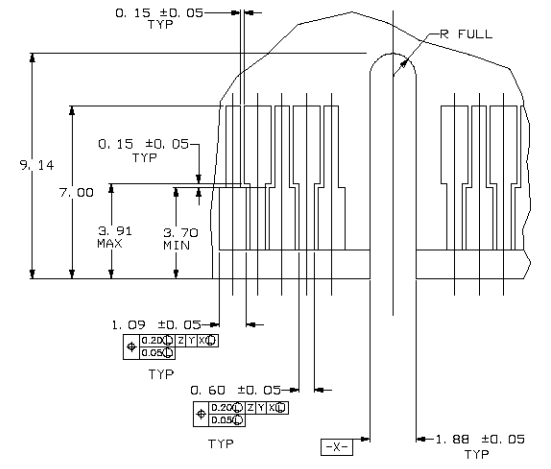
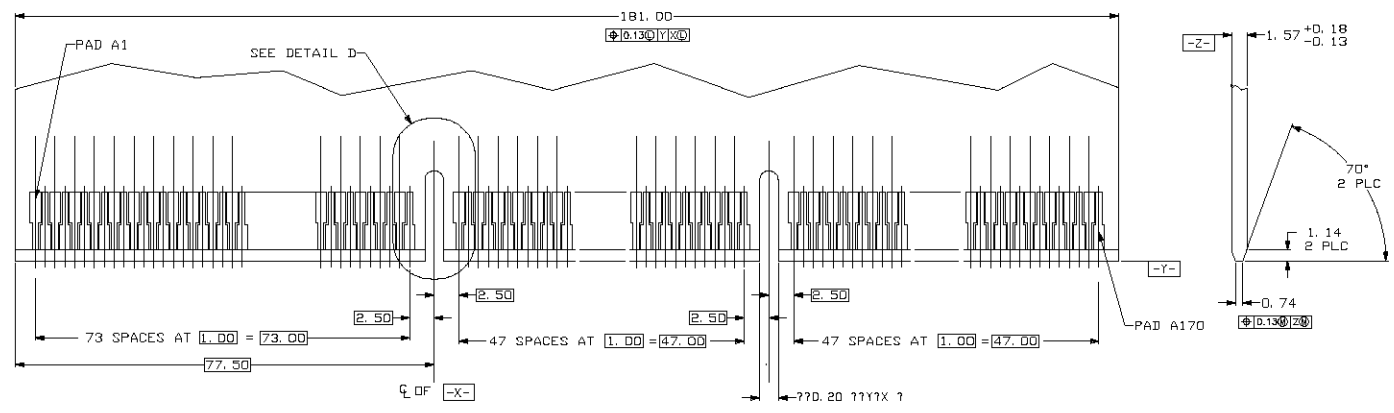
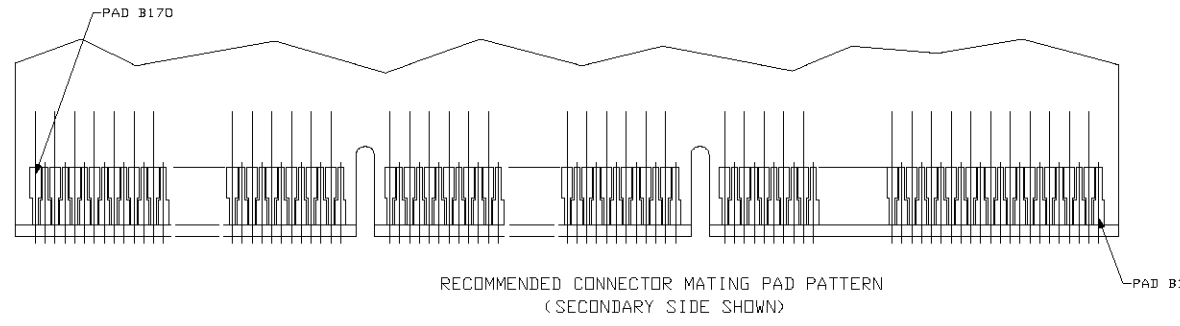
SCALE: 4:1 SHEET 1 OF 2

CUSTOMER DRAWING

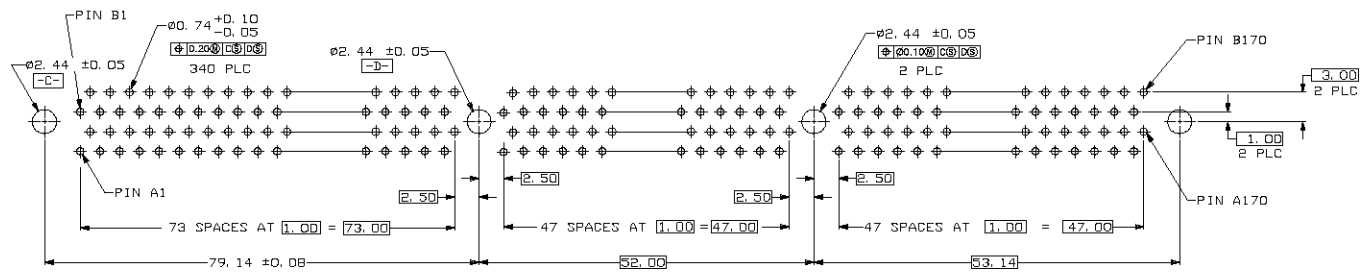
REV: 0

THIS DRAWING IS UNCLASSIFIED  
 EXCEPT WHERE SHOWN OTHERWISE  
 BY THE ELECTRONICS CORPORATION. ALL RIGHTS RESERVED.

REVISONS		DATE	BY	APP
NO.	DESCRIPTION			
1	SEE SHEET 1/2			



DETAIL D  
 SCALE 10:1



RECOMMENDED CONNECTOR MOUNTING HOLE PATTERN  
 (CONNECTOR SIDE SHOWN)

THIS DRAWING IS A CONTROLLED DOCUMENT.		DR: GAVIN ZHANG	2248003	Type Electronics Corporation Shanghai, P.R.China, 200223
DRAWN BY: STEVEN YAO		2248003	2248003	
DATE: 2023.08.13	DESIGNED BY: LENDONGTANG	2248003	2248003	Electronics
PRODUCT SPEC: ASSEMBLY, 340 POSITION 1mm, CARD EDGE CONNECTOR		APPLICATION SPEC: ---		
MATERIAL: ---		SCALE: 4:1		RESTRICTED TO: ---
CUSTOMER DRAWING		PART NO: A100779		REV: 0